

# Global Partnership for Results-Based Approaches

## What is GPRBA?

**Global Partnership for Results-Based Approaches (GPRBA)**, established in 2003, is a unique World Bank Global Program that designs and implements innovative interventions of Results-Based Financing (RBF) to improve the quality and access of urban infrastructure and services.

## What does GPRBA do?

GPRBA performs three core functions:

**Grant Funding:** Implement innovative RBF projects leveraging World Bank, government, and private financing.

**Technical Assistance:** Promote the adoption and utilization of RBF by government and other stakeholders.

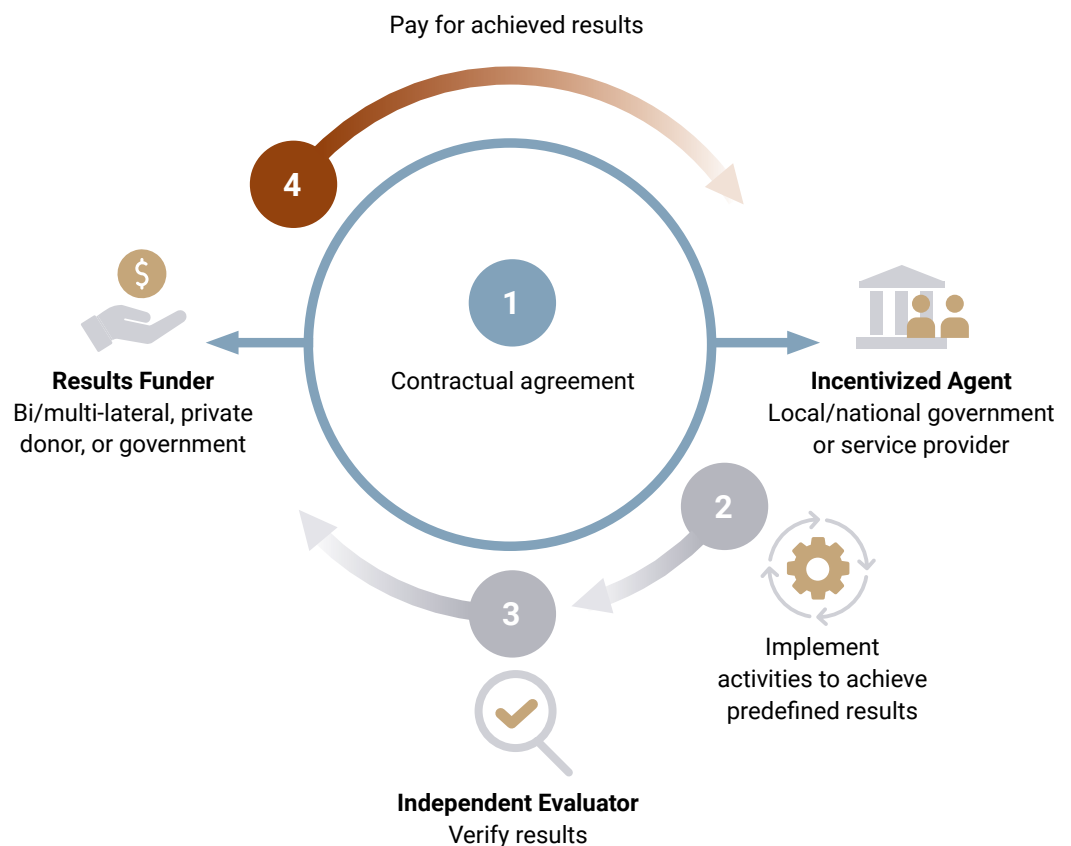
### Communication, Dissemination, & Learning:

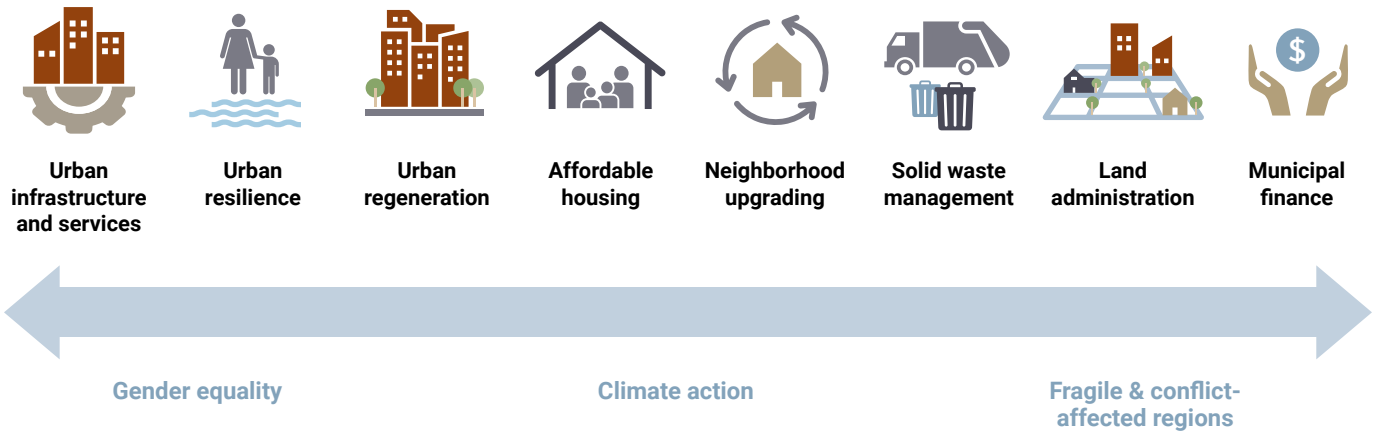
Strengthen the RBF knowledge base, document lessons learned and inform the design of future interventions.

GPRBA acts as catalyst, leading to the replication and scale-up of successful interventions by demonstrating effective, results-based approaches.

## What is Results-Based Financing?

Results-Based Financing (RBF) is a financing arrangement in which payments are contingent upon the achievement of specific, predefined, and verified results. It is aimed at effectively incentivizing stakeholders to achieve measurable outcomes.





## Which sectors does GPRBA focus on?

GPRBA historically provided grant funding and technical assistance to projects covering education, energy, health, land administration, solid waste, telecommunications, water, and sanitation. Since 2024, GPRBA has refined its strategic initiatives within the Urban, Resilience, and Land Global Department in the World Bank, concentrating on the implementation of RBF approaches in urban development, disaster risk management (DRM), and land-related issues, incorporating cross-cutting thematic areas such as climate change, gender equality, and support in fragile and conflict affected areas.

By applying RBF to these critical sectors, GPRBA is both advancing the evolution of this financing instrument and maximizing its impact by leveraging its strategic position to achieve the World Bank's mission to end extreme poverty and boost shared prosperity on a livable planet.

## What are the key features of GPRBA?

**Unique Trust Fund Focus and Capacities:** GPRBA is the only trust fund in the World Bank which is dedicated to RBF and which directly funds project grants supporting urban infrastructure and service, in addition to technical assistance activities.

**Pilot and Scale Urban RBF Solutions:** GPRBA has the unique flexibility to test new applications of RBF in urban sectors (e.g., solid waste management), with potential to scale up and mainstream effective solutions across the World Bank operations.

**Leverage World Bank Urban Portfolio:** Situated in the Urban, Resilience, and Land Global Department of the World Bank – which has one of the largest portfolios – GPRBA leverages the department's wide-ranging capacities, country relations, and portfolio.

## What are the impacts?

**GPRBA has provided financial and technical support for 59 projects across 31 countries and territories, committing US\$ 310million – 92% of which has been allocated to low-and middle-income countries – benefiting over 13 million people.**

In Liberia GPRBA supported the Cheesemanburg Landfill and Urban Sanitation Project provided 675,000 people, approximately 48 percent of the population in Greater Monrovia, with access to regular solid waste collection.

West Bank and Gaza Real Estate Registration Project supported a systematic land registration process enhancing land and property services and land records and registering 161,804 properties.

## Who are GPRBA's donors?

U.K. Foreign, Commonwealth & Development Office, the Australian Department of Foreign Affairs and Trade, the Dutch Ministry of Foreign Affairs, the European Union, the International Finance Corporation and the Swedish International Development Cooperation Agency.

### For more information:

Visit GPRBA: [www.gprba.org/knowledge/resources](http://www.gprba.org/knowledge/resources)

Subscribe to our Newsletter: [Subscribe here](#)

RBF Bibliography: <https://www.gprba.org/knowledge/rbf-bibliography>

E-learning on RBF: <https://www.gprba.org/knowledge/multimedia>